



MEETING AND EVENT SPACES

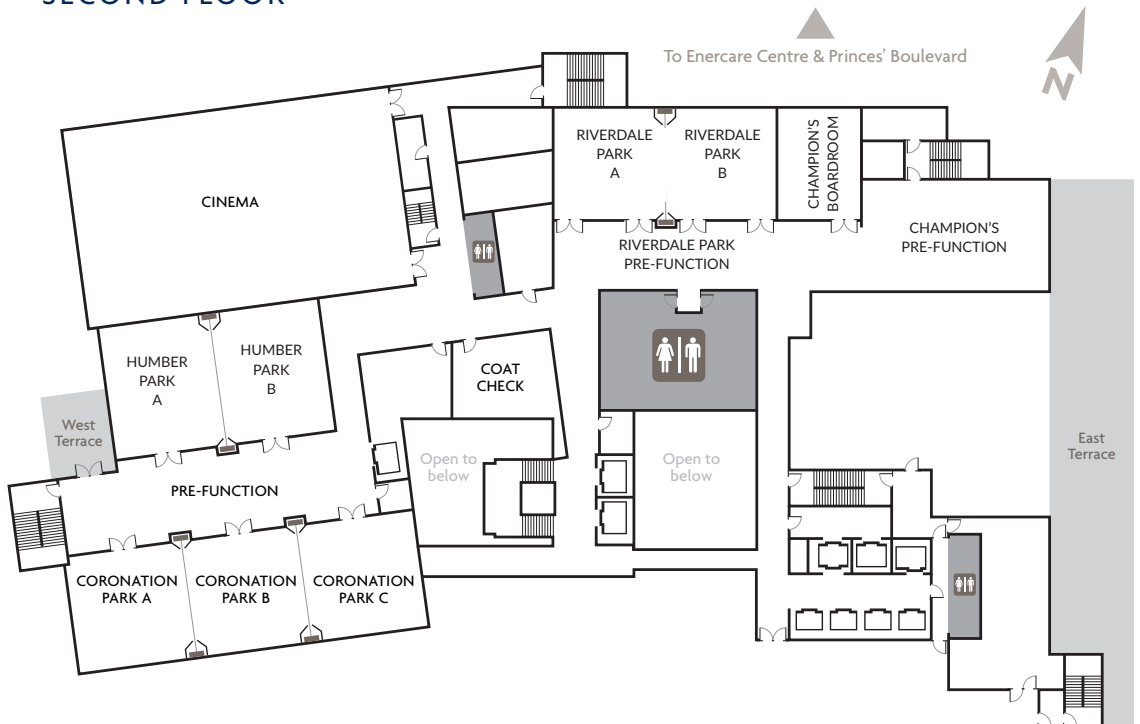
IT'S ABOUT YOU.
IT'S ABOUT THE VIEW.



THIRD FLOOR



SECOND FLOOR



For Bookings
and information
please contact
Hotel X Toronto at:

T. 1.855.943.9300

E. Stay@HotelXToronto.com

HotelXToronto.com

HOTEL X TORONTO MEETING & EVENT SPACES

	Area	Length	Width	Height	Classroom	Banquet	Reception	Theatre	Hollow Square	U Shape	Crescent Rounds	Exhibits 10x10
GROUND LEVEL												
Cinema	4,500 sq.ft.	93'	48'5"	25'2"	-	-	-	250	-	-	-	-
Screening Room	1,536 sq.ft.	41'6"	37'	11'3"	-	-	-	56	-	-	-	-
New Fort Hall - Glass Area	2,820 sq.ft.	60'4"	47'	20'	84	150	250	192	60	39	105	-
New Fort Hall - Prefunction	1,332 sq.ft.	55'6"	24'	9'4"	-	-	-	-	-	-	-	-
Kandy Gallery	2,083 sq.ft.	59'6"	35'	11'11"	-	-	200	-	-	-	-	-
Arts & Entertainment Concourse	1,575 sq.ft.	97'9"	16'11"	11'11"	-	-	200	-	-	-	-	-
Lobby Bar	1,779 sq.ft.	56'6"	31'6"	10'11"	-	-	87	-	-	-	-	-
VIP Check-In	953 sq.ft.	35'8"	26'8"	10'10"	-	-	-	-	-	-	-	-
Departure Lounge	1,177 sq.ft.	40'7"	29'	10'5"	-	-	-	-	-	-	-	-
SECOND FLOOR												
Champion's Boardroom	582 sq.ft.	27'11"	21'	12'6"	-	-	-	-	16	-	-	-
Champion's Boardroom Pre-Function	1,350 sq.ft.	28'2"	48'2"	12'6"	30	48	100	-	16	20	-	30
Riverdale Park	1,600 sq.ft.	28'8"	55'8"	12'6"	42	80	150	120	42	33	48	10
Riverdale Park A	800 sq.ft.	28'8"	27'11"	12'6"	21	40	85	50	20	21	24	4
Riverdale Park B	800 sq.ft.	28'8"	27'11"	12'6"	21	40	85	50	20	21	-	4
Riverdale Park Pre-Function	1,438 sq.ft.	16'	79'2"	12'6"	-	-	100	-	-	-	-	7
Humber Park	1,920 sq.ft.	34'4"	56'	12'6"	96	120	200	150	54	39	72	12
Humber Park A	960 sq.ft.	34'4"	28'	12'6"	48	60	100	90	42	24	36	6
Humber Park B	960 sq.ft.	34'4"	28'	12'6"	48	60	100	90	42	24	36	6
Coronation Park	2,634 sq.ft.	30'	87'9"	12'6"	120	160	275	288	96	45	84	18
Coronation Park A	876 sq.ft.	30'	29'3"	12'6"	48	40	90	75	42	21	24	4
Coronation Park B	876 sq.ft.	30'	29'3"	12'6"	48	40	90	75	42	21	24	4
Coronation Park C	876 sq.ft.	30'	29'3"	12'6"	48	40	90	75	42	21	24	4
Coronation Park A-B	1,740 sq.ft.	30'	58'2"	12'6"	100	140	180	150	84	50	84	8
Coronation Park B-C	1,740 sq.ft.	30'	58'2"	12'6"	100	140	180	150	84	50	84	8
Coronation Park Pre-Function	1,421 sq.ft.	18'	80'4"	12'6"	-	-	155	-	-	-	-	7
The Terrace at Maxx's Kitchen	1,350 sq.ft.	125'9"	10'8"	-	-	213	-	-	-	-	-	-
THIRD FLOOR												
Victory Ballroom	6,300 sq.ft.	60'4"	104'6"	14'10"	324	516	619	560	132	69	216	50
Victory Ballroom North	3,150 sq.ft.	60'4"	52'3"	14'10"	162	220	315	280	66	35	198	15
Victory Ballroom South	3,150 sq.ft.	60'4"	52'3"	14'10"	162	220	315	280	66	35	198	15
Victory Ballroom Terrace	1,176 sq.ft.	71'8"	16'5"	-	-	-	60	-	-	-	-	-
Victory Ballroom Pre-Function	3,360 sq.ft.	112'	30'	12'6"	-	-	200	-	-	-	-	18
Marina Terrace	3,487 sq.ft.	64'8"	53'10"	-	-	-	250	-	-	-	-	-
Princes' Gates Ballroom	3,578 sq.ft.	42'5"	83'10"	12'6"	144	210	354	336	102	66	147	30
Princes' Gates Ballroom East	1,789 sq.ft.	42'5"	41'11"	12'6"	122	105	177	147	51	74	90	15
Princes' Gates Ballroom West	1,789 sq.ft.	42'5"	41'11"	12'6"	-	105	177	147	51	74	90	15
Princes' Gates Pre-Function	2,842 sq.ft.	51'5"	55'4"	10'10"	-	130	300	-	-	-	-	14
East Terrace	995 sq.ft.	49'9"	20'	-	-	-	60	-	-	-	-	-
The Bow Tie	760 sq.ft.	28'	27'2"	10'10"	-	-	30	-	-	-	-	-
The Pearl	816 sq.ft.	47'8"	17'11"	10'10"	-	-	40	-	-	-	-	-
Trillium Park Studio	750 sq.ft.	20'7"	36'2"	10'10"	-	-	60	-	30	22	-	-
FOURTH FLOOR												
High Park Terrace	6,966 sq.ft.	104'4"	64'6"	-	-	180	567	300	-	-	-	-
SPECIALTY SUITES												
Bi-Level Penthouse Suite <small>25th/26th Floor</small>	1,421 sq.ft.	46'22"	20'11"	19'11"	-	-	70	-	-	-	-	-
Presidential Suite <small>26th Floor</small>	1,352 sq.ft.	46'2"	22'6"	8'3"	-	-	60	-	-	-	-	-
FALCON SKYBAR												
The Nest <small>27th Floor</small>	1,450 sq.ft.	48'2"	30'	8'10"	-	-	140	-	-	-	-	-
The Nest Terrace	620 sq.ft.	77'4"	8'	-	-	-	39	-	-	-	-	-
The Nook <small>27th Floor</small>	330 sq.ft.	13'3"	24'2"	9'3"	-	12	20	-	-	-	-	-
The View <small>28th Floor</small>	1,433 sq.ft.	28'8"	55'8"	14'10"	54	100	150	150	54	36	60	6
The View Pre-Function	410 sq.ft.	31'	12'10"	10'11"	-	-	30	-	-	-	-	-
The View Terrace	290 sq.ft.	22'2"	13'	-	-	-	15	-	-	-	-	-
The Perch <small>28th Floor</small>	1,313 sq.ft.	42'6"	30'10"	9'11"	-	-	95	-	-	-	-	-
The Perch Terrace <small>Pool Deck</small>	774 sq.ft.	30'7"	25'4"	-	-	-	51	-	-	-	-	-
The Peak <small>29th Floor</small>	1,455 sq.ft.	29'3"	32'7"	-	-	-	178	-	-	-	-	-
The Lawn <small>29th Floor</small>	2,360 sq.ft.	63'	31'2"	-	-	-	178	100	-	-	-	-
STANLEY BARRACK'S GARDENS												
Indoor Event Space <small>Suitable for 25-50 pax</small>	<i>Coming Summer 2019</i>	-	-	-	-	-	-	-	-	-	-	-
North Plaza <small>Facing Princes' Blvd</small>	60,000 sq.ft.	-	-	-	-	-	5,000	-	-	-	-	-
West Patio	10,000 sq.ft.	-	-	-	-	-	350	-	-	-	-	-
South Plaza <small>Parade Gardens, Facing the Lake</small>	25,000 sq.ft.	-	-	-	-	-	2,500	-	-	-	-	-
BEANFIELD CENTRE & ENERCARE CENTRE												

Hotel X Toronto is located on Exhibition Place, adjacent to the Beanfield Centre and directly across the street from the Enercare Centre. Plans to connect Hotel X Toronto and the Beanfield Centre via a skybridge will commence in 2020, creating a seamless transition between properties for event attendees and hotel guests. The Beanfield Centre, boasting over 160,000 sq.ft. of event space is connected via an underground tunnel to the Enercare Centre, which is home to over 1 million sq.ft. of flexible convention space. **All room layouts are subject to change based on the function requirements. Each event is customized based on client needs.*